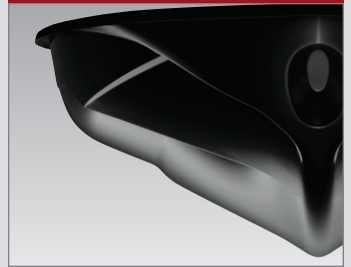
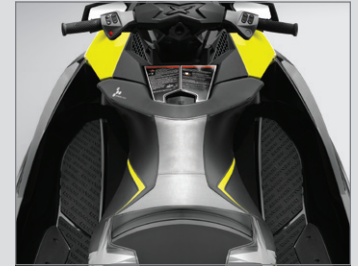


MUSCLECRAFT – 2013

RXP-X[®] 260



T³ Hull



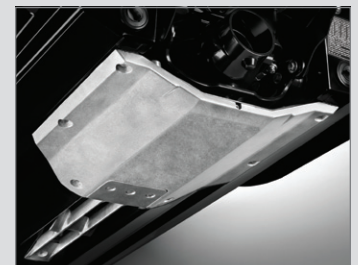
Ergolock system



Adjustable rear sponsons



Trim tabs



Intake grate and ride plate



X-Gauge with boost indicator

The Sea-Doo[®] RXP-X model is extremely agile with incredible speed and muscle. With its revolutionary new T³ Hull[™], you get the absolute best in handling, as it redefines nimble with sharp, precise cornering. The Ergolock[™] system minimizes fatigue, allowing for a longer ride. Plus it's also plenty fast with its race-proven Rotax[®] engine. It's up to 20% more fuel efficient than the Kawasaki[™] Ultra 300X!



PWC
of the
Year

PWC
Today



reddot design award

SPECIFICATIONS

DIMENSIONS

Length	130.6" / 331.6 cm
Width	48.3" / 122.7 cm
Height	45.2" / 114.7 cm
Weight (dry)	812 lb / 368.3 kg
Rider capacity	2
Fuel capacity	15.9 gal / 60 l
Storage capacity	30.8 gal / 116.6 l

ENGINE

Type	1503 XHO Rotax 4-TEC [®] engine
Intake system	Supercharged with external intercooler, 60 mm throttle body
Bore x stroke	100 mm x 63.4 mm
Displacement	1,494 cc
Compression ratio	8.4:1
Cooling	Closed-Loop Cooling System (CLCS)
Fuel type	87 octane – minimum 91 octane – recommended

DRIVE UNIT

Propulsion system	Sea-Doo [®] Direct Drive
Jet pump	Aluminum, axial flow, single stage, large hub with 10-vane stator
Transmission	Electronic iBR [®]
Impeller	Stainless steel

ELECTRICAL

Ignition	Digital induction
Starter	Electric
Battery	12 V

HULL AND DECK

Type	T ³ Hull
Color	Dayglow Yellow

¹Based on BRP internal testing. Testing of competitive model done under similar conditions at wide-open throttle.





ENGINE

1,494 cc four-stroke, Rotax with four valves per cylinder	Supercharged, intercooled 1503 XHO Rotax 4-TEC engine provides reliable ultra-high performance in fresh or salt water, increased torque at low RPM, optimized power at all RPM levels and throttle positions.
Multi-port fuel injection	Better control of exhaust emission and power at all RPM ranges to reduce emissions and reduce fuel consumption.
iTC™ (Intelligent Throttle Control) system	Operating electronically, this advanced throttle system starts you in neutral for easier dockside starts. It also features an activity-specific Touring / Sport mode and ECO™ mode that can all be set to accommodate your riding style. The result is a more responsive, more intuitive ride.
iControl® Learning Key®	The programmable Learning Key allows you to limit the performance of the PWC based on rider skill level.
D-Sea-Bel™ system	Combines a series of resonators and vibration-absorbing components to make Sea-Doo watercraft some of the quietest on the water.
Closed-Loop Cooling System	Uses coolant to keep the engine running at the ideal temperature, much like a car's radiator. Also keeps out corrosive saltwater and debris.
Water/air separator	Provides maximum airflow to engine and reduces water intrusion.
Watertight digital ignition	Provides optimal energy for a consistent spark, ensuring maximum performance.
RPM limiter	Protects engine from over-revving.
Warning device	Warns operator of engine and exhaust overheating, engine management and system failure.
Handlebar-mounted start/stop button	Engine starts and stops with single, user-friendly control button.
Tip Over Protection System (T.O.P.S.™)	Protects engine in case of turn over.

FEATURES

iControl	The "Brain" that integrates and controls all systems to create the best possible ride.
T ³ Hull	Innovative multi-staged design with extreme hard and soft chines. Allows for more precise cornering, enhances lean-in, cuts water and tracks better; extremely responsive.
Ergolock system	Combination of ergonomic features allow amazing control while cornering with less upper body fatigue. It features a narrow racing seat with knee grab design, adjustable handlebars and angled footwells that allow you to "lock" in when cornering hard. This results in faster turns and more time on the water.
Trim tabs	Limit bow rise and improve parallelism to water. Also increase tracking in rough water conditions.
High-performance electric VTS™ (Variable Trim System)	Provides pre-set positions for quick settings when adjusting boat trim, maximizes acceleration and high-speed stability.
ECO mode	The iTC function that automatically determines the most economical power delivery and sets the optimal RPM for greatest fuel economy.
Interactive Multifunction Digital Information Center	Reports 30 key operating functions: Fuel level, Tachometer, Speedometer, Hour meter, Boost indicator, Compass, Clock, Fuel consumption meter, Time/Distance to empty, Touring/Sport mode, ECO mode, VTS preset, Top/average speed/RPM, Lap timer, F-N-R indicator, Low fuel level, Low oil level / pressure, Low / high voltage, Overheat, Engine temperature, Check engine, Key (wrong key), Learning Key, Maintenance info, Error codes.
Digitally Encoded Security System (D.E.S.S.™)	Industry's first digitally encoded theft-deterrent system.
Off-Throttle Assisted Steering (O.T.A.S.™)	Provides the operator with additional steering effect in off-throttle situations for greater maneuverability.

FEATURES CONT'D

Elevated fuel filler	Tow hook
Bumpers	Dual drain plugs
Front splash deflector	External exhaust cooling flush attachment
Wide-angle mirrors	Emergency floating lanyard
Footwell carpets w/ Sea-Doo pattern	Seat strap
Swim platform carpet w/ Sea-Doo logo	Operator's guide, instructional video and booklet
Rear grab handle	

PROPULSION SYSTEM

iBR (Intelligent Brake & Reverse) system	The world's only on-water braking system, iBR lets you stop up to 100 feet sooner than any other watercraft ¹ . All with the squeeze of a lever. And with its electronic reverse, it gives you a level of maneuverability that makes docking easier.
Sea-Doo Direct Drive propulsion system	Delivers optimum performance with the Rotax engine.
Replaceable UHMW ² wear ring	Provides long impeller life, less maintenance and maximum thrust.
Dual automatic vacuum siphon pumps	Continuously removes water entering the engine compartment.
Large diameter drive shaft with crowned spline design	Maintains engine and pump alignment at all operating speeds.
Stainless steel impeller	Delivers improved acceleration, higher top speed and less cavitation.
Aluminum stator vanes	Handles the high-performance engine without erosion.

X-PACKAGE

X-Coloration seat	Race-inspired design for comfort and great looks.
X-Handlebars with A.E.S.™ (Adjustable Ergonomic Steering)	The only fully adjustable handlebar in the industry. With A.E.S. the rider can adjust the handlebar width and grip angle for a fully customized ride.
X-Gauge with boost indicator	Shows the boost pressure in real-time from minimum (idle) to max boost pressure (open throttle) at all times so the rider knows the engine load condition.
Adjustable rear sponsons	An efficient design that improves lateral stability. 3-position adjustable for your skill level and riding environment: higher for a more playful freeride experience or lower for more aggressive turning. Winglet feature enhances lean angles during turning.

OPTIONS

Slow mode	Sandbag anchor
Cruise control	Safety kit
Depth finder	Fire extinguisher
Speed Tie™	Sea-Doo Move trailer
Fold-down reboarding step	Storage cover
Removable dry bag for front storage	iCatch™ bow cup

WARRANTY

BRP limited warranty covers the watercraft for one year.



SEA-DOO

